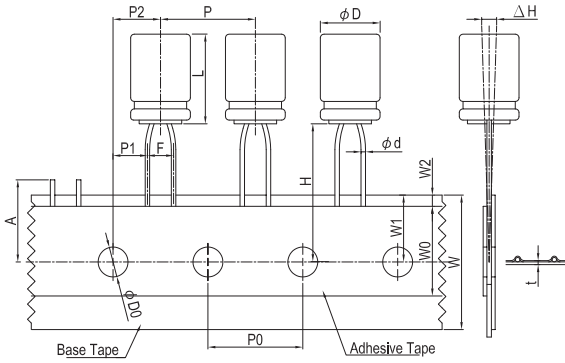
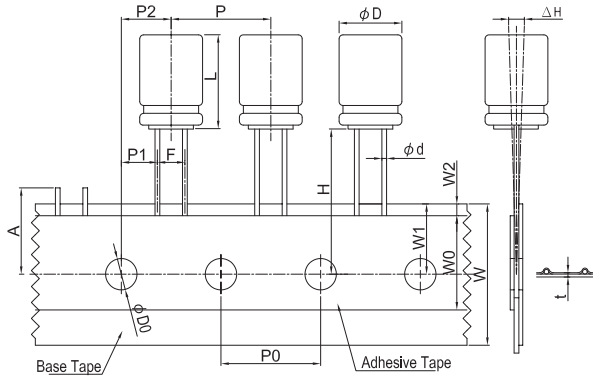


## Taping Specifications for Radial Type of OP-CAP (Applicable Standard JIS C 0806-2)

**Fig. 1**



**Fig. 2**



Unit: mm

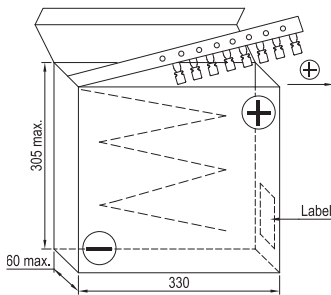
Packing	SA								
	$\phi D$	5		6.3		8		10	Tol.
Symbol	L	8	5.5 ~ 6.5	8	11	6.5 ~ 8	$\geq 11.5^{*1}$	$\geq 10^{*1}$	Tol.
$\phi d$		0.5	0.45	0.6	0.5	0.6	0.6	0.6	$\pm 0.05$
F		2.5	2.5		3.5		3.5	5.0	$+0.8/-0.2$
H		18.5						18.5	$\pm 0.75$
P		12.7						12.7	$\pm 1.0$
P0		12.7						12.7	$\pm 0.2$
P1		5.1	5.1		4.6	4.6		3.85	$\pm 0.7$
P2		6.35						6.35	$\pm 1.3$
W		18.0						18.0	$\pm 0.5$
W0		10.0		12.0	10.0	12.0	min.	12.0	min.
W1		9.0						9.0	$\pm 0.5$
W2		1.5						1.5	max.
A		11.0						11.0	max.
$\phi D0$		4.0						4.0	$\pm 0.2$
$\Delta H$		0						0	$\pm 1.0$
t		0.7						0.7	$\pm 0.2$
Fig. No.		1	2				---	2	---

Note: \*1: The tolerance in L for 16 mm is +1.5 mm, for 20 mm is + 2.0 mm.

- If you need parts with pitch is 5.0 mm taping (5 ~ 8  $\phi$ ), please consult with us before placing order.
- Customized taping may be available upon request. Please consult with us.

### Package

**Fig. 3** Ammo pack box



### Package Quantity

Unit: pcs / box

$\phi D$ (mm)	5	6.3	8	10
Quantity	2,000	2,000	1,000	500

Note: The component shall be oriented on the tape as such that the positive lead is leading or the negative lead is leading with customer's request.

## Lead Cutting Specifications for Radial Type of OP-CAP

Unit: mm

Forming Method	Code	Shape	Dimensions			
Cut (5 $\phi$ ~ 10 $\phi$ )	CC		$\phi D \times L$	$\phi d$	F	H
			5	0.5	2.0	
			6.3 x 5.5 ~ 6.5	0.45	2.5	
			6.3 x 8	0.6		
			6.3 x 11	0.5	3.5	4.5
			8	0.6		
10	0.6	5.0				